

United Kingdom

An island heritage



Edinburgh Children's Festival

For such a compact country the United Kingdom offers outstanding variety – from London, a truly international city and the world's capital of theatre, fashion and arts, to provincial England's historic cities, busy seaside resorts, quaint villages, wild moorlands and gentle countryside. The rugged beauty of Scotland's sea

lochs, islands, glens and highlands co-exist with the sophistication of Georgian Edinburgh and Glasgow's exciting post-industrial reincarnation. Remote mountains, gentle valleys, windswept cliffs and languid sands of rural Wales up to Cardiff, the principality's rejuvenated capital and across the Irish Sea, from Northern Ireland's green hills and rugged coast to busy Belfast, it is a country of immense beauty.

Variety is not confined to the landscape. Britain's long history, its legacy of imperialism and more recently, the arrival of immigrants from around the world have resulted in an extraordinary diversity of cultural influences. In the arts, this is expressed through theatre, concerts, opera, ballets and

galleries. In food, through a multiplicity of ethnic cuisines that now supplement traditional dishes. In festivals and celebrations, from the stately Changing of the Guard at Buckingham Palace to the joyous Notting Hill Carnival, Europe's largest street festival; and in entertainment, from the gentle pleasures of taking a rowing boat on the Thames or having a pint in a centuries-old pub to dancing the night away in a nightclub or thrilling to hair-raising rides in a theme park.

Sightseeing

Vibrant cities, lively seaside resorts and peaceful countryside just beyond the cities. England's Lake District, Scotland's Highlands, the Welsh



Houses of Parliament and Big Ben, London



mountains and valleys, Northern Ireland's spectacular coast. Almost wherever you go, you will find ancient castles, stately palaces, historical treasures, amazing architecture, entertainment parks and fascinating museums and galleries.

Accommodation

Conveniently located city and airport hotels, apartments and historic castles in Scotland.

Family activities

Madame Tussauds (London), London Eye, Thorpe Park (Surrey), Alton Towers (Staffordshire), Blackpool Pleasure Beach, Our Dynamic Earth (Edinburgh), Glasgow Science Centre, National Space Science Centre (Leicester), Warwick Castle (Shakespeare's Stratford), Legoland (Windsor), and Chessington World of Adventure (Surrey).

Shopping

What you can buy – Designer clothes, high street fashion, arts and crafts, woollen and woven goods, souvenirs, jewellery, luxury foods, chocolates and antiques.

Where you can buy – Large shopping malls; small stores and boutiques; street and flea markets and factory outlets.

Entertainment

Plenty of entertainment facilities are available throughout the country. British food and drink is best sampled at a local level. Visit a producer or chef at his place of work or try food and drink at a farmer's market, country fair, pub or hotel and discover the real taste of Britain. London is

famous for its opera, ballet, concerts and theatre. This is the home of Shakespeare after all. For those who come alive after dark, Britain's nightlife – in bars, clubs, discos and casinos is second-to-none. Throughout the year you will find festivals of cinema, jazz, dance, plays, live music, opera, fringe theatre, comedy and cabaret.

Sports and leisure

Famous cricket, rugby and football stadiums; motor racing circuits and golf courses throughout the country.

Events

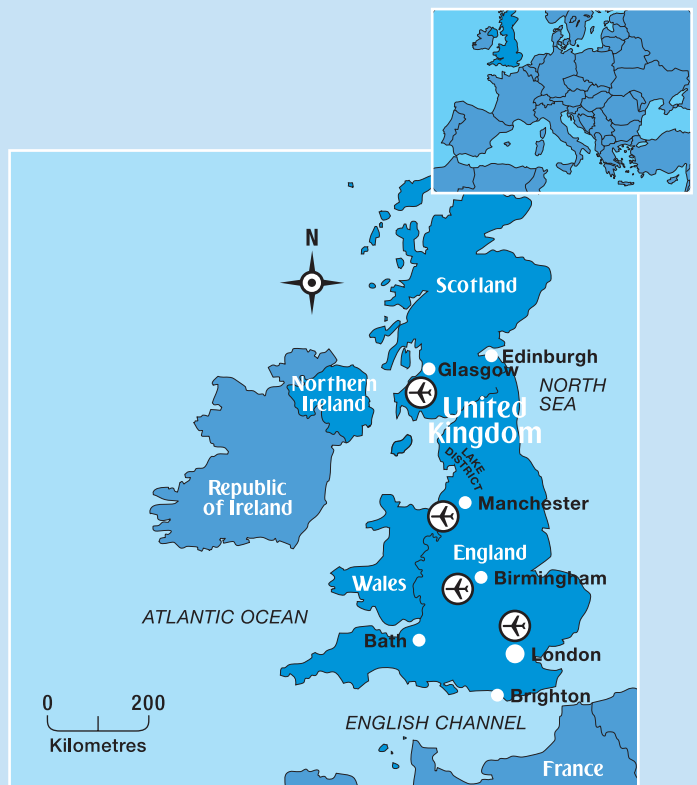
Glasgow Art Fair (April); London Marathon (April); Chelsea Flower Show (May); Trooping the Colour – The Queen's Birthday Parade (June); Royal Ascot (June); Wimbledon Tennis Championship (June/July); Tour De France (July); Farnborough Airshow 2008 (July); Notting Hill Carnival (August); Grand Prix Silverstone (June); Glasgow International Piping Festival (August); Edinburgh Military Tattoo (August); London Fashion Week (September).

Honeymoon

Whether you enjoy the buzzing cities or would like to discover the picturesque countryside, quaint towns and villages, Britain offers a great destination for honeymooners.

Exploring by road

With excellent road and motorway networks, Britain is ideally suited for self-drive car rental. Driving is on the left-hand side of the road.



Average climate in United Kingdom		J	F	M	A	M	J	J	A	S	O	N	D
🌡️	MAX °C	6	7	10	13	17	20	22	21	19	14	10	7
	MIN °C	2	2	3	6	8	12	14	13	11	8	5	4
☀️	HRS	2	2	4	5	6	7	6	6	5	4	2	2
☁️	MM	54	40	37	37	47	45	57	58	50	58	64	48

Daily maximum and minimum averages are guides only and may vary.



Classic Scotland tour

8 days/7 nights • Self-drive • Overland car tour

Glasgow • Edinburgh • Perth • Deeside • Inverness • Loch Ness • Fort William • Oban • Loch Lomond • Trossachs • Stirling • Glasgow

- Mountains and lochs – coastlines and islands
- Castles and whisky country
- Cultural treasures and great hospitality

Scotland remains one of Europe's last expanses of unspoilt wildernesses, with its dramatic landscapes containing mountains, sea lochs, moors and forests as well as delightful towns and villages.

Day 1: Glasgow

Arrive at Glasgow International Airport and collect your car. Explore the city's museums, galleries and parks or go shopping. Overnight in Glasgow.

Day 2: Glasgow — Edinburgh — Perth (135 kilometres)

Visit Edinburgh Castle, Princes Street and the 16th century old town before heading north for an overnight stay in Perthshire.

Day 3: Perth — Royal Deeside (105 kilometres)

See Perth and visit Scone Palace before travelling through Royal Deeside to Braemar. See Balmoral, the Royal Family's Scottish home. Overnight in Royal Deeside.

Day 4: Deeside — Nairn — Inverness (150 kilometres)

Journey through the Grampian Mountains, visiting Tomintoul, the highest village in Great Britain, a whisky distillery and Nairn before staying overnight in the Inverness area.



Pipers

Courtesy of britainonview.com

Day 5: Inverness — Loch Ness — Fort William — Oban (165 kilometres)

Explore Inverness before heading to Oban via Loch Ness, Urquhart

Castle, Fort Augustus and Fort William, at the foot of Ben Nevis, Britain's highest mountain. Overnight in the Oban area.

Day 6: West Coast (Mull excursion 75 kilometres)

Discover Oban, or take the ferry to the isle of Mull, visiting Tobermory, Duart and Torosay Castle. Overnight in the Oban area.

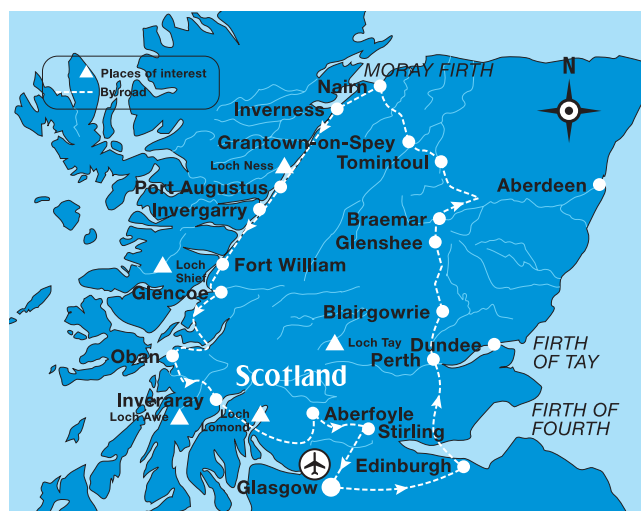
Day 7: Oban — Loch Lomond — Trossachs (190 kilometres)

Drive via Loch Awe and Kilchurn Castle, lovely Inveraray, to Loch Lomond, one of Scotland's most beautiful lochs. Overnight in the scenic Trossachs region.

Day 8: Trossachs — Stirling — Glasgow (75 kilometres)

Travel to Glasgow via Stirling and return your car at the airport before your onward flight.

Total distance: 820 kilometres.



Tour available as:

- Self-drive – Includes car and pre-booked 3 or 4 star accommodation in hotels and country homes or castles.

London

City of surprises



London, one of the world's greatest cities, offers visitors a vast array of things to see and do – historic monuments, shopping, festivals, museums, galleries and great entertainment. The city is home to thousands of immigrants and cultural diversity contributes to its vibrant ever-changing atmosphere. Rest assured though that traditional London still exists. From high tea almost anywhere to the Changing of the Guard at Buckingham Palace, the city still abounds with the culture and the charm of days gone by.

The capital is alive and vibrant with the sounds of Brit-pop and techno at Victorian pubs to experimental theatre on stages built for Shakespearian plays to operas and live concerts. Sports lovers will never be short of excitement when they come to London.

Places of interest: Changing of the Guard at Buckingham Palace, Tower of London, Houses of Parliament, Big Ben, Tower Bridge, Hyde Park, Westminster Abbey, Docklands, Natural History and British Museum, Tower of London, Dali Universe and Kensington Palace.

For the family: London Eye, London Aquarium, Madame Tussaud's, London Planetarium, Rock Circus, The London Dungeon, London Zoo, The Lion King (musical) and IMAX theatre.

Best buys: With over 30,000 shops and stores to choose from, as well as

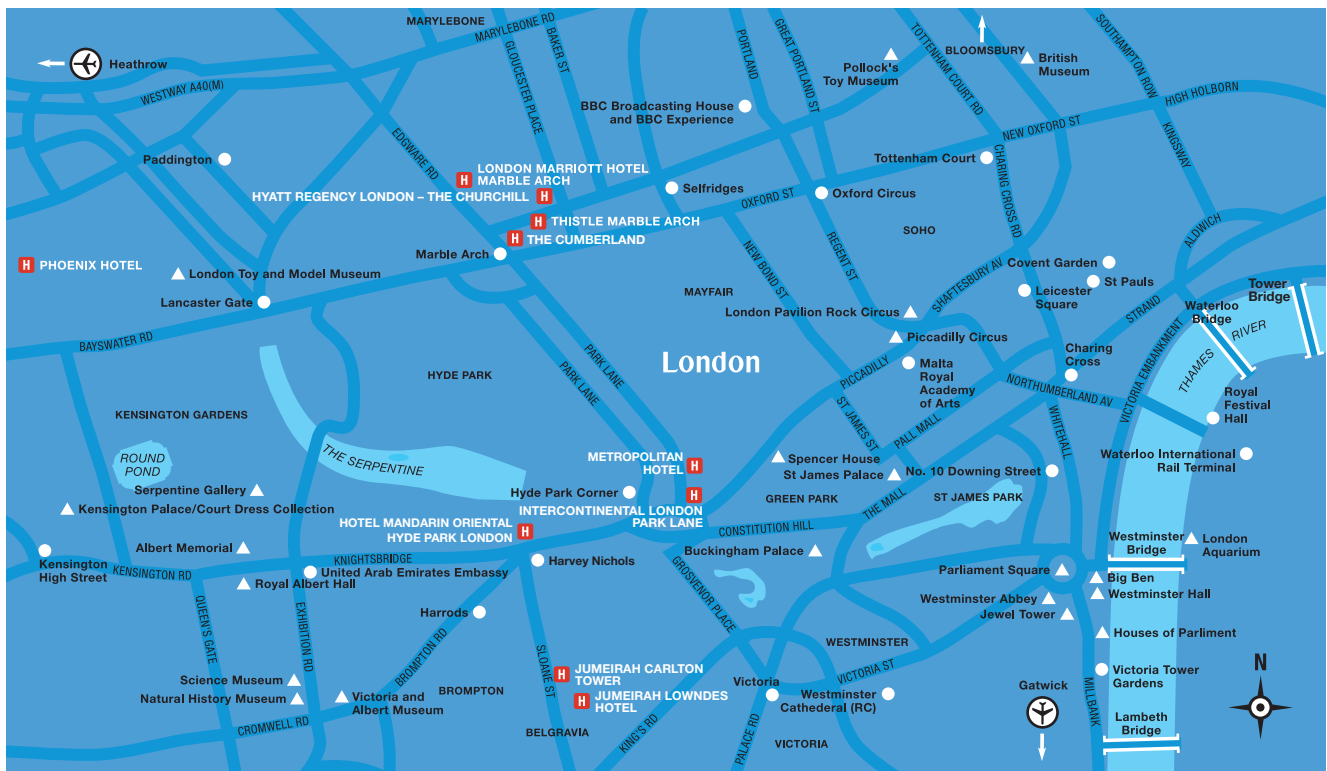
a burgeoning reputation in the fashion world, shoppers will not be disappointed. Oxford Street for top chains and international retailers; Bond Street, **Kensington High Street, Covent Garden and Knightsbridge** (Harrods, Harvey Nichols) for designer shops; **street markets** at Camden, **Portobello Road** and Petticoat Lane.

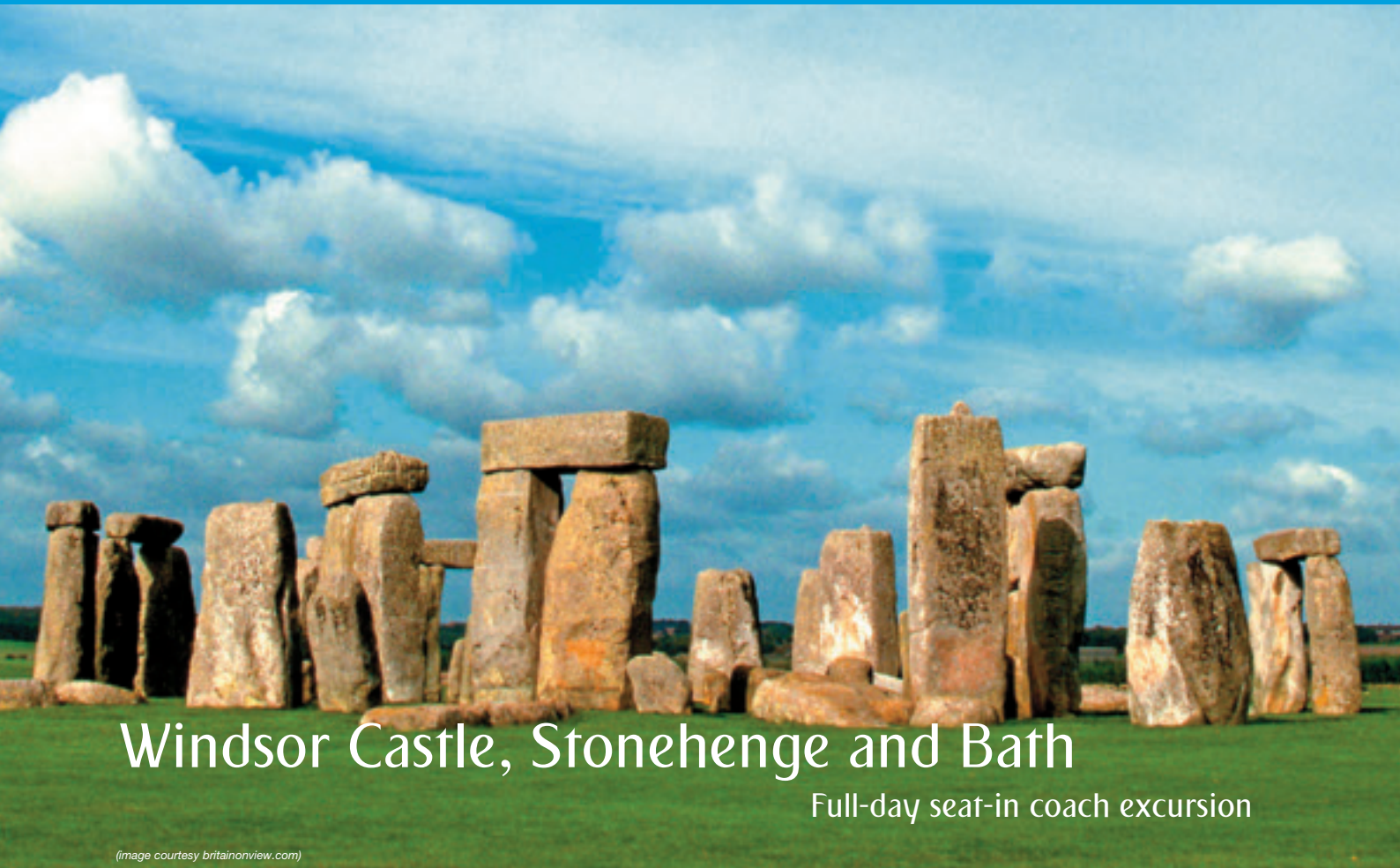
The city's shopping scene has changed dramatically over the last few years. Many of the top department stores, including the world-famous Selfridges, have become fabulous 21st century temples to shopping. Quintessentially British brands have put a new spin on their traditional excellence in tailoring. Perhaps the most relaxing way to shop in London is to wander along one of the capital's colourful and fascinating street markets – Camden, Portobello, Spitalfields and Petticoat Lane are just some of the markets worth a visit.

Out and about: Massive choice of **theatres, concerts, musicals**, movies and opera. **Excellent nightlife** with clubs, bars, pubs and street entertainment.

Sports and leisure: Tennis, riding, cricket, jogging, rugby and football.

● Landmarks ▲ Places of interest H HOTELS

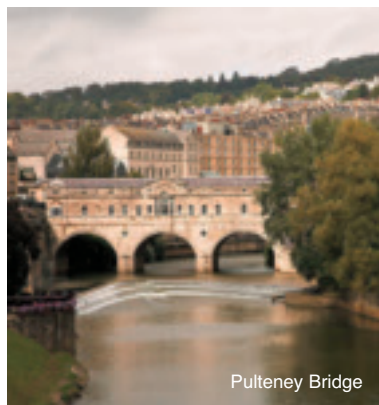




Windsor Castle, Stonehenge and Bath

Full-day seat-in coach excursion

(image courtesy britainonview.com)



Pulteney Bridge

This excursion takes you to Windsor Castle and the State Apartments, Stonehenge, a panoramic tour of the Georgian city of Bath and the Roman Baths.

In the morning we meet at the Victoria Coach Station and head towards **Windsor Castle**, the largest and oldest occupied castle in the world and the home of the Royal Family for 900 years. Founded by William the Conqueror, its towering walls dominate the delightful riverside town that has grown around the castle over the centuries.



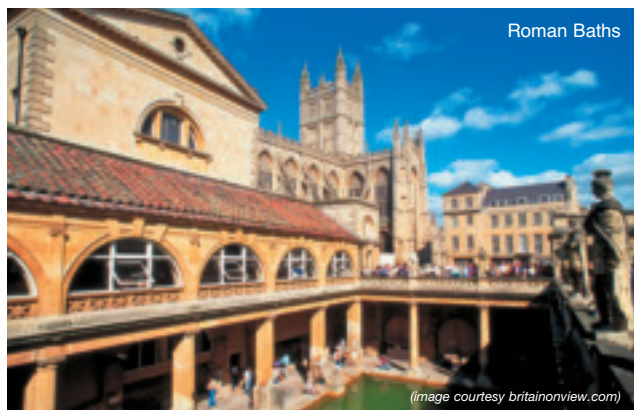
Windsor Castle

At Windsor, you experience the real sense of British history. During your visit you will see the lavishly decorated **State Apartments** containing priceless furniture, porcelain, armour, carvings and above all, paintings, particularly the work of Van Dyck and Rembrandt.

In the light and spacious **St George's Chapel**, home to the 14th century Order of the Royal Garter, Britain's highest order of chivalry, are magnificent fan vaultings, delicate ironwork and intricately carved choir-stalls. You will also see the ceremony of the Changing of the Guard in all its colourful pageantry and splendour.

As we make our way west through the rolling green **Wiltshire** landscape and on to the bare uplands of **Salisbury Plain**, your journey takes you even further back into the mists of time to **Stonehenge**, a vast stone temple built some 5,000 years ago. Whilst the precise origins and purpose of this colossal structure are unknown, the ancient builders aligned the massive stones so that the midsummer sunrise dawns exactly over the **Heel Stone**.

And then on to **Bath**, **Aquae Sulis** as it was known to the Romans, a city renowned for its elegant Georgian architecture and its mineral-rich hot water springs. You will see **Bath Abbey**, the "**Lantern of the West**", **Pulteney Bridge**, modelled on the Ponte Vecchio in Florence and the exquisitely proportioned Georgian streets and crescents. You also visit the **Roman Baths** that made the city famous, where the waters are still sought for medicinal purposes.



Roman Baths

(image courtesy britainonview.com)



Lake District

Full-day train excursion from London

This enthralling train excursion takes you far away from the busy streets and hectic lifestyle of London to the peace and tranquillity of **Cumbria**.

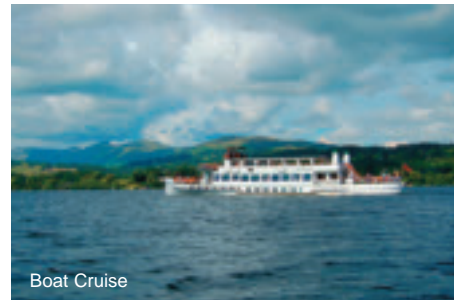
After meeting in front of the main ticket office at Euston station, your day starts with a relaxing train journey, travelling past old market towns and cities built during the Industrial Revolution, to the spectacular **Lakeland landscapes** of England's far north-west.

On arrival at Oxenholme you will be met by our guide who will be your escort for the tour of the **Lake District**. We start with a boat cruise, before visiting the picturesque mediaeval village of **Hawkshead**, an enchanting combination of whitewashed houses, cobbled streets and narrow alleyways.

En route through the **Langdale Valley** you will see the magnificent views from **Tarn How**, one of the Lake District's most picturesque spots.

Afternoon tea is provided at the **'World of Beatrix Potter'**, a magical recreation of the books complete with the sights, sounds and smells of the countryside, before returning to the station in time for the evening train back to London.

This excursion operates in summer only.



Boat Cruise

Jumeirah Carlton Tower



Location: Knightsbridge.

Situated in fashionable Knightsbridge, Jumeirah Carlton Tower is only a short stroll away from many of London's finest department stores, including Harvey Nichols, Harrods and the exclusive boutiques on Sloane Street. This luxurious, intimate Jumeirah property is specially designed for the discerning traveller. All rooms combine sophistication, with true luxury. London Heathrow International Airport is 25 kilometres away.

The hotel's three restaurants offer an abundant selection of mouth-watering cuisine. The Rib Room serves the finest Aberdeen Angus beef and first-class seafood. Experience the gracious elegance of traditional afternoon tea at the Chinoiserie.

The exclusive Peak Health Club & Spa, overlooking the rooftops of Knightsbridge, offers an extensive range of health and fitness facilities – a 20-metre indoor pool and a state-of-the-art golf simulator.

Facilities: 161 rooms and 59 suites. Three restaurants, bar, 24-hour room service, shops, hairdresser, beauty salon, business centre, babysitting, interconnecting and non-smoking rooms.

Guest Rooms: Air-conditioning, hairdryer, bathrobe, TV, CD, Wi-Fi, minibar, tea and coffee and safe.

Sports and leisure: Indoor pool, fitness centre, spa, sauna, jacuzzi, steam bath, solarium and massage.

Check-in: 1400 hours

Check-out: 1200 hours.



Guest Room



Hotel Mandarin Oriental Hyde Park London 



Location: Knightsbridge.

This Victorian-style luxurious and elegant hotel offers marvellous views over the royal park. The Mandarin Oriental Hyde Park, one of the capital's most distinguished hotels, is located in fashionable Knightsbridge, opposite famous department stores Harrods, Harvey Nichols and many more chic and exclusive shops. The hotel's own spa featuring ESPA products, provides total relaxation to discerning guests. London Heathrow International Airport is 25 kilometres away.

Facilities: 198 rooms and suites. Two restaurants, bar, 24-hour room service, safety deposit boxes, business centre, babysitting,

interconnecting and non-smoking rooms.

Courtyard Rooms: Air-conditioning, hairdryer, bathrobe, TV, CD, wireless connectivity, minibar and safe.

Knightsbridge Rooms: Additionally these rooms offer views over Knightsbridge.

Sports and leisure: Indoor pool, fitness room, spa, sauna, jacuzzi, steam bath and massage.

Check-in: 1400 hours/**Check-out:** 1200 hours.



Courtyard Room



Hyatt Regency London - The Churchill 



Location: Near Marble Arch at Portman Square.

Situated in the heart of London's West End and overlooking the picturesque gardens of Portman Square, this luxurious and stylish hotel offers friendly service with great emphasis on attention to detail. London Heathrow International Airport is 25 kilometres away.

Facilities: 438 rooms and suites. Two restaurants, bar, 24-hour room service, hairdresser, beauty salon, safety deposit boxes, business centre, babysitting, interconnecting and non-smoking rooms.

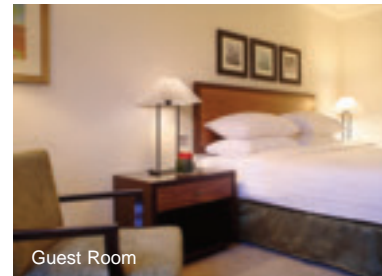
Guest Rooms: Air-conditioning, hairdryer, bathrobe, TV, wireless connectivity, data ports, minibar, tea and coffee and safe.

View Rooms: Additionally these rooms offers views of Portman square garden.

Sports and leisure: Fitness room, steam room, sauna and tennis court across the road.

Check-in: 1400 hours

Check-out: 1200 hours.



Guest Room

InterContinental London Park Lane 

Location: Park Lane.

With a landmark location this hotel is situated between Hyde Park and Green Park with fabulous views over Knightsbridge and Mayfair. It is a short walk from the designer shops of Sloane Street and Bond Street. Its unique destination restaurant Theo Randall, run by its namesake offers its own interpretation of regional Italian cuisine. London Heathrow International Airport is 25 kilometres away.

Facilities: 447 rooms and suites. Two restaurants, three bars, 24-hour room service, shops, beauty salon, business centre, children's activities,

babysitting, interconnecting and non-smoking rooms.

Standard Rooms: Air-conditioning, hairdryer, bathrobe, TV, CD, data ports, minibar, tea and coffee, iron and safe.

Sports and leisure: Fitness room, spa and sauna.

Check-in: 1400 hours

Check-out: 1200 hours.



Standard Room



Metropolitan Hotel

Location: Park Lane.

This luxuriously designed hotel is centrally located on Park Lane, close to Hyde Park and the shopping area. The Metropolitan Hotel combines chic, contemporary décor with attentive personalised service. It is ideal for those seeking to be at the centre of action. Nobu at the Metropolitan Hotel is an elegant restaurant considered an essential experience for gourmands. London Heathrow International Airport is 25 kilometres away.

Facilities: 155 rooms and suites. Restaurant, bar, 24-hour room service, shop, beauty salon, business centre, babysitting, interconnecting and non-smoking rooms.

Deluxe City View Rooms: Air-conditioning, hairdryer, bathrobe, TV, wireless connectivity, minibar, tea and coffee and safe.

Sports and leisure: Fitness room, sauna, steam bath and massage.

Check-in: 1400 hours

Check-out: 1200 hours.



Deluxe City View Room



Jumeirah Lowndes Hotel

Location: Knightsbridge.

Set against the serene backdrop of a leafy London Square, Jumeirah Lowndes Hotel is only minutes away from Harrods, Harvey Nichols and the exclusive stores of Sloane's Street. This elegant and enchanting boutique hotel is specially designed for the discerning traveller seeking discreet personalised service in a relaxed atmosphere. London Heathrow International Airport is 25 kilometres away.

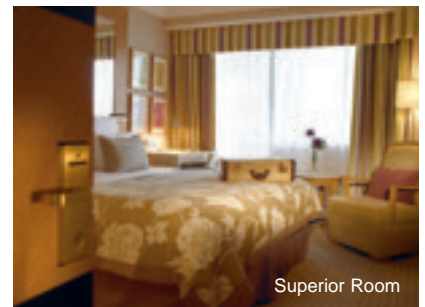
Facilities: 87 rooms and suites. Restaurant, bar, 24-hour room service, interconnecting and non-smoking rooms.

Superior Rooms: Air-conditioning, hairdryer, bathrobe, TV, data ports, minibar, tea and coffee and safe.

Sports and leisure: The Peak Health Club & Spa, available at the adjacent Jumeirah Carlton Tower.

Check-in: 1400 hours

Check-out: 1200 hours.



Superior Room

The Cumberland

Location: Marble Arch.

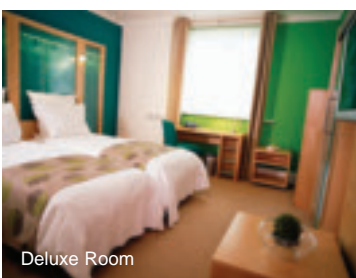
This unique landmark property enjoys one of the most enviable locations in the city – at the northern end of prestigious Park Lane, directly overlooking Marble Arch and the green expanses of Hyde Park. The hotel reception is a large, open space, resembling an art gallery creating an extraordinary ambience. The ultra modern designer bedrooms are airy and welcoming. Each bedroom is individually styled and contains personalised works of art. London Heathrow International Airport is 25 kilometres away.

Facilities: 1,016 rooms and suites. Two restaurants, two bars, 24-hour room service, shop, babysitting, interconnecting and non-smoking rooms. Suitable for the physically challenged.

Deluxe Rooms: Air-conditioning, hairdryer, bathrobe, TV, wireless connectivity, refrigerator, tea and coffee, iron and safe.

Check-in: 1400 hours

Check-out: 1200 hours.



Deluxe Room



Thistle Marble Arch ✓✓✓✓

Location: Near Marble Arch.

The Thistle Marble Arch is located in London's famous shopping district of Oxford and Bond Street, close to Edgware Road and just a short walk from the busy streets of Covent Garden. This traditional English hotel is an ideal base from which to explore the city. London Heathrow International Airport is 25 kilometres away.

Facilities: 692 rooms and suites. Two restaurants, bar, 24-hour room service, shop, babysitting, interconnecting and non-smoking

rooms. Suitable for the physically challenged.

Standard Rooms: Air-conditioning, hairdryer, TV, wireless connectivity, refrigerator, tea and coffee and safe.

Deluxe Rooms: Additionally these rooms are larger and have a separate sitting area, bathrobe, CD and iron.

Sports and leisure: Fitness room.

Check-in: 1400 hours

Check-out: 1200 hours.



Standard Room



London Marriott Hotel Marble Arch ✓✓✓✓

Location: Near Marble Arch.

Situated off Edgware Road, this hotel is within easy reach of the famous Oxford, Regent and Bond Street and the tranquil gardens of Hyde Park. The London Marriott Hotel Marble Arch is an elegant, modern hotel with a warm and charming ambience, offering excellent services. London Heathrow International Airport is 25 kilometres away.

Facilities: 240 rooms and suites. Restaurant, bar, 24-hour room service, business centre, babysitting, interconnecting and non-smoking rooms.

Deluxe Rooms: Air-conditioning, hairdryer, TV, wireless connectivity, minibar, tea and coffee, iron and safe.

Executive Rooms: Additionally these rooms have a bathrobe and offer free access to the Executive Lounge.

Sports and leisure: Indoor pool, fitness room, sauna and jacuzzi.

Check-in: 1500 hours

Check-out: 1200 hours.



Deluxe Room

Phoenix Hotel ✓✓✓

Location: Bayswater.

This city-centre hotel is within walking distance of Kensington Gardens and Hyde Park. It is set in one of London's famous garden squares and close to many shops, restaurants and attractions like Portobello Road. The Phoenix Hotel is made up of eight town houses originally built in 1854, tastefully converted and refurbished to suit today's

modern traveller, whilst retaining a comfortable atmosphere. London Heathrow International Airport is 24 kilometres away.

Facilities: 130 rooms, breakfast room, bar, limited hours of room service and safety deposit boxes.

Standard Rooms: Hairdryer, TV, data ports, wireless connectivity and tea and coffee.

Check-in: 1400 hours

Check-out: 1100 hours.



Standard Room





Glasgow

Gateway to the Highlands

Glasgow is one of Europe's liveliest cities – a centre of style and vitality set against a backdrop of outstanding Victorian architecture. Glasgow boasts world-famous art collections and museums, stunning parks, the best shopping, special events and festivals, vibrant nightlife – and gives easy access to the Highlands and coast.

Places of interest: Glasgow School of Art; **Burrell Collection**; the Tall Ship at Glasgow Harbour; **River Clyde**; **Gallery of Modern Art** and Glasgow Cathedral.

For the family: **Glasgow Science Centre with IMAX cinema**; 127-metre Glasgow Tower; **planetarium and demo theatre**; Museum of Scottish Country Life; The People Palace at Glasgow Green and Kelvingrove Art Gallery and Museum.

Best buys: Shopping is an absolute delight in Glasgow.

Places to shop: Giant high street malls and **Princes Square**, special shops at Merchant City and Barras weekend market.

Out and about: Scottish Opera, The Arches festivals, theatres, comedy clubs, restaurants and vibrant nightlife in bars and nightclubs.

Sporting attractions: Football, golf, swimming, fishing, shooting, sailing, ice skating, go-karting, archery, pony trekking, canoeing and mountain biking. Most recommended are the golf courses in the region of Ayrshire especially at Turnberry.



Edinburgh & surrounding Scotland

Majestic Edinburgh and the home of golf

Edinburgh Castle looks down on a city where mediaeval lanes and elegant Georgian terraces hold over 1,000 years of history and tradition. The castle dominates the urban skyline, perched atop the crags of an ancient volcano right in the centre of the city.

Edinburgh has one of the most beautiful cityscapes in the world, making it an ideal city break destination. There is plenty to see and do with a perfect balance between the traditional and the contemporary. Discover world-class museums and galleries or simply take a tour of the city on an open bus. From the world-famous festivals to top-class restaurants and bars and fabulous shopping to its Georgian and Victorian architecture and winding mediaeval streets, it is easy to see why Edinburgh has been listed as a UNESCO World Heritage site.

Golf was invented in Scotland in the 15th century and today you will find some of the world's oldest courses, known as links, amongst the dunes of the east coast. There are over 500 golf courses in Scotland, both public and private, catering for every level of play. The championship courses are renowned for their immaculately kept greens and challenging holes and although they are favoured by serious players, anybody with a valid handicap certificate can enjoy them. We provide you with a hand-picked selection of one of the finest golf resorts located at scenic Auchterarder near Perth.

Apart from golf, Scotland is a superb year-round destination for outdoor activities of all kinds: the lochs and coastline are ideal for water sports, boating and cruising; its rivers provide exciting trout and salmon fishing and its mountains are wonderful for skiing, climbing and hill walking.

And should you wish to rejuvenate mind, body and spirit, Scotland's spas enable you to unwind, relax and enjoy their high standards of service and unique approach to wellness and health.

Places of interest: Panoramic views from **Carlton Hill**; **Edinburgh Castle**, Royal Botanic Gardens; River Forth; **Grassmarket**; Palace of Holyroodhouse; Leith Docks; Scotch Whisky Heritage Centre and Scott Monument.

For the family: **Our Dynamic Earth**, **Deep Sea World**, Edinburgh Zoo and Edinburgh Museum.

Best buys: Unrivalled range of **Scottish merchandise** – including woollens, antiques, gifts, maps, prints, fossils, kites and candles.

Places to shop: **Royal Mile** and **Victoria Street** in Edinburgh and villages of Fenton Barns and Freeport.

Out and about: Innovative theatre companies; ballets, orchestras and operas; West End plays and musicals. Plenty of live music in pubs, bars and restaurants.

Sporting attractions: Europe's largest dry ski slope, biking, shooting, archery, trekking and golf. Most recommended are the golf courses near St Andrews.



Loch Lomond, the Trossachs and Stirling Castle

Full-day seat-in-coach excursion

Scottish Highlands



Falls of Falloch

Spend a day in the majestic heart of Scotland; a land of ancient fortresses, flowing streams, lochs, forests and hills; a land of kings, heroes and rogues! Meet at George Square and leave Glasgow by luxury coach. Begin the day by travelling the length of Scotland's longest loch, **Loch Lomond**.

You may opt for a cruise starting from the picturesque village of **Tarbet** surrounded by woods and mountains on the west side of Loch Lomond. Proceed through spectacular scenery to **Crianlarich**, passing the pretty

'Falls of Falloch' before having lunch at Kilmahog in the heart of the **Trossachs**, an area famous for its beautiful landscape.



Stirling Castle



Loch Lomond

The tour continues through **'Rob Roy'** territory to Aberfoyle and then to Stirling where you will have the opportunity to visit the impressive **Stirling Castle**, which was built in the 12th century, where a Roman Fort was located in ancient times. Situated on a high volcanic rock, overlooking the entire region, this remarkable landmark position makes the castle visible from miles. During your visit you will learn more about the exploits of key historical figures and Royalties like William Wallace, Robert Bruce **King of Scots**, King James V, **Mary Queen of Scots** and Bonnie Prince Charlie.



The Trossachs

De Vere Cameron House



Location: Banks of Loch Lomond.

Located on Loch Lomond's 'bonny banks', yet only 40 kilometres from Glasgow's city centre, Cameron House lies amongst 100 acres of magnificent wooded parkland. Glasgow International Airport is 28 kilometres away.



Facilities: 126 rooms and suites. Five restaurants, four bars, 24-hour room service, shop, hairdresser, beauty salon, safety deposit boxes, children's activities, babysitting, interconnecting and non-smoking rooms. Suitable for the physically challenged.



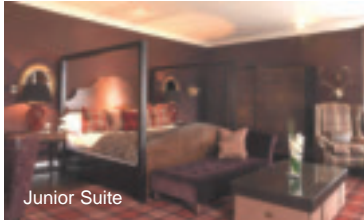
Garden View Rooms: Hairdryer, bathrobe, TV, data ports, minibar, tea and coffee, iron and safe.

Junior Suites: Additionally these rooms are larger.

Sports and leisure: Indoor pool, fitness centre, spa, sauna, jacuzzi, steam bath, solarium, massage, golf course, tennis courts, squash courts, badminton, table tennis, billiards and private marina.

Check-in: 1500 hours

Check-out: 1100 hours.



Junior Suite



Hilton Glasgow

Location: City centre.

Situated beside the River Clyde, the Hilton Glasgow is located in the heart of this exciting and vibrant city. This stylish property features a range of facilities that includes a health club, restaurants serving fine Scottish, Italian and international cuisine and the popular Raffles Bar. Glasgow International Airport is 12 kilometres away.

Facilities: 319 rooms and suites. Three restaurants, bar, 24-hour room service, shop, hairdresser, safety deposit boxes, business centre, babysitting, interconnecting and non-smoking rooms. Suitable for the physically challenged.

Standard Rooms: Air-conditioning, hairdryer, TV, data ports, minibar and tea and coffee.

Sports and leisure: Indoor pool, fitness room, sauna, jacuzzi, solarium and massage.

Check-in: 1500 hours

Check-out: 1200 hours.



Standard Room

Thistle Glasgow

Location: Cambridge Street.

Thistle Glasgow is conveniently situated in the heart of Glasgow's entertainment and shopping area and provides an ideal base from which to explore this fascinating city. The hotel has an Otium health and leisure club with a variety of facilities. Glasgow International Airport is nine kilometres away.

Facilities: 300 rooms and suites. Restaurant, bar, 24-hour room service, beauty salon and non-smoking rooms.

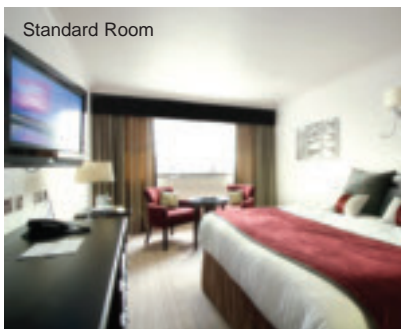
Standard Rooms: Air-conditioning, hairdryer, TV, tea and coffee and iron.

Executive Rooms: Additionally these rooms are larger and have a data port and safe.

Sports and leisure: Indoor pool, fitness centre, spa, sauna, jacuzzi, solarium and massage.

Check-in: 1400 hours

Check-out: 1200 hours.



Standard Room



The Balmoral 



Location: Princes Street.

Centrally located with easy access to shopping and other attractions, The Balmoral, part of the Rocco Forte Collection combines the noble character of a Baron's home and the sophistication of an international hotel. It features a Michelin star chef and a variety of outlets and lounges. Glasgow International Airport is 85 kilometres away.

Facilities: 188 rooms and suites. Two restaurants, three bars, 24-hour room service, beauty salon, safety deposit boxes, business centre, babysitting, interconnecting and non-smoking rooms.

Classic Rooms: Air-conditioning, hairdryer, bathrobe, TV, wireless connectivity, minibar, tea and coffee, iron and safe.

Deluxe Rooms: Additionally these rooms are larger.

Sports and leisure: Indoor pool, fitness centre, spa, sauna, steam bath and massage.

Check-in: 1500 hours

Check-out: 1200 hours.



Deluxe Room



Apex City Hotel 

Location: Grassmarket.

This contemporary-style hotel is ideally situated in the centre of Grassmarket in the Old Town with stunning views of the castle. Its prime location makes it ideal for business as well as leisure travellers. Shopping, the Royal Mile, Holyrood House, Dynamic Earth, Princes Street and Edinburgh Castle are all within easy reach of the hotel. Glasgow International Airport is 85 kilometres away.

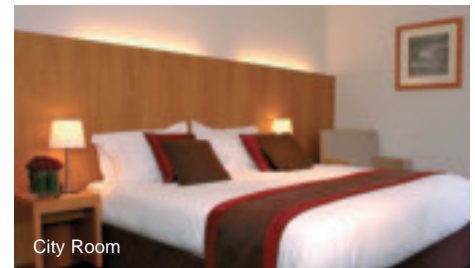
Facilities: 119 rooms and suites. Restaurants, bar, 24-hour room service, safety deposit boxes, business centre, babysitting, interconnecting and non-smoking rooms.

City Rooms: Hairdryer, TV, wireless connectivity, CD player, DVD, tea and coffee.

Sports and leisure: Indoor pool and fitness room available at the nearby Apex International Hotel.

Check-in: 1400 hours

Check-out: 1200 hours.



City Room

Point Hotel 

Location: Near Grassmarket.

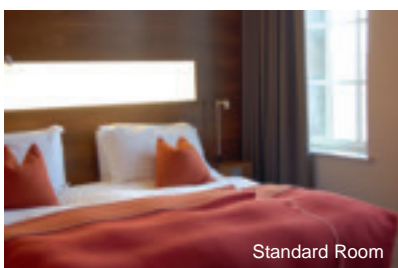
Stylish and modern, Point Hotel is located on Bread Street, minutes away from the financial district, Edinburgh Castle, shopping areas and the conference centre. The excellent standard of hospitality and service make the Point Hotel a popular destination for short as well as weekend stays. The hotel's unique minimalist and contemporary design, provides comfortable and stylish accommodation and includes a trendy and popular restaurant and bar. Glasgow International Airport is 85 kilometres away.

Facilities: 140 rooms and suites. Restaurant, bar, limited hours of room service, safety deposit boxes, business centre, interconnecting and non-smoking rooms.

Standard Rooms: Hairdryer, TV and tea and coffee.

Check-in: 1400 hours

Check-out: 1100 hours.



Standard Room



Gleneagles Hotel



Location: Perth, Auchterarder.

This luxurious hotel, 'The Palace in the Glen' was designed in the style of a French chateau stunningly located within three top golf courses. Gleneagles means golf, however there is a range of indoor and outdoor activities apart from golf catering especially to families. Glasgow International Airport is 72 kilometres away.



Facilities: 228 rooms and suites. Four restaurants, two bars, 24-hour room service, shops, beauty salon, safety deposit boxes, business centre, children's activities, babysitting, interconnecting and non-smoking rooms.



Estate Rooms: Hairdryer, bathrobe, TV, data ports, minibar, tea and coffee, iron and safe.

Sports and leisure: Indoor and outdoor pool, fitness room, spa, sauna, jacuzzi, steam bath, massage, golf course, tennis and squash courts.

Check-in: 1400 hours

Check-out: 1200 hours.



Estate Room



The Westin Turnberry Resort

Location: Ayrshire.

This luxurious and magnificently restored resort enjoys a spectacular coastal setting with breathtaking views of Arran, Alisa Craig and the Irish Sea. Enjoy world-class golf on two of the hotels very own championship courses. Indulge at the award-winning spa and experience exhilarating country pursuits at The Outdoor Activity Centre. Glasgow International Airport is 85 kilometres away.

Facilities: 219 rooms and suites. Three restaurants, three bars, 24-hour room service, shops, beauty salon, safety deposit boxes, babysitting, interconnecting and non-smoking rooms.

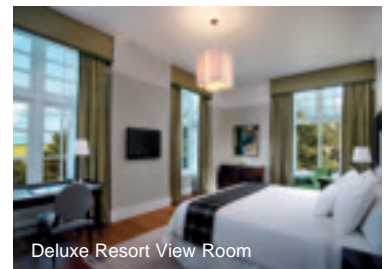
Deluxe Resort View Rooms:

Hairdryer, bathrobe, TV, data ports, minibar, tea and coffee, iron and safe.

Sports and leisure: Indoor pool, fitness room, spa, sauna, jacuzzi, steam bath, solarium, massage and golf course.

Check-in: 1500 hours

Check-out: 1200 hours.



Deluxe Resort View Room

Old Course Hotel Golf Resort & Spa



Location: St Andrews.

The Old Course Hotel Golf Resort & Spa is stunningly situated overlooking the infamous 17th Road Hole and the entire Old Course. St Andrews is renowned worldwide as 'The Home of Golf' with no less than 10 courses which suit all player levels. Glasgow International Airport is 130 kilometres away.



Facilities: 146 rooms and suites. Three restaurants, two bars, 24-hour room service, shops, hairdresser, beauty salon, safety deposit boxes, business centre, babysitting, interconnecting and non-smoking rooms.

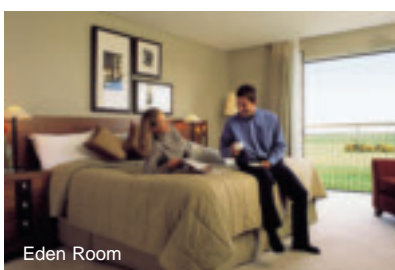


Eden Rooms: Hairdryer, bathrobe, TV, CD, wireless connectivity, minibar, tea and coffee, iron and ironing board.

Sports and leisure: Indoor pool, fitness centre, spa, sauna, jacuzzi, steam bath, massage and golf course.

Check-in: 1500 hours

Check-out: 1200 hours.



Eden Room

